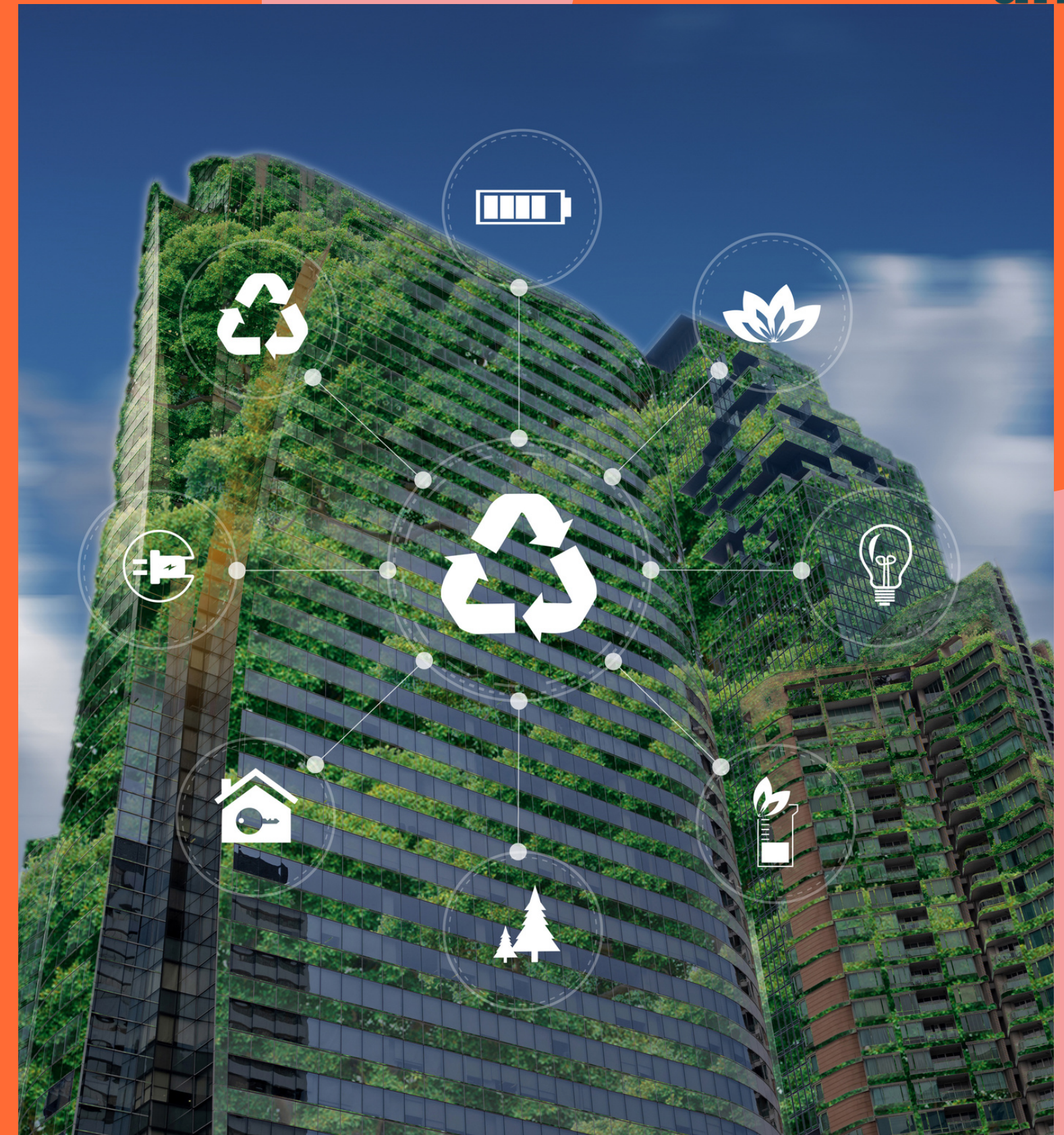


Sustainability and Accessibility

SUSTAINABILITY

SMALL IMPROVEMENTS CAN
MAKE A BIG CHANGE



Events

1

RE-USE

Re-Use equipment from past events.

- *Think about useability when you buy*
- *avoid single use*

2

PARTNERSHIPS

Consider who you partner with and their policies

3

EQUIPMENT FREE EVENTS

Run events where you do not need equipment or the attendees bring their own

- *E.g. Karaoke*



Trips

1

CARPOOL/PUBLIC TRANSPORT

Reduce your carbon emissions by coming trips or using public transport to get around

2

LEAVE NO TRACE

Consider what you leave behind at the places you visit, leave it better than you found it

3

BRING REUSEABLE ITEMS

Reusable water bottles and containers for lunch rather than single use



Fayres

1

PAPER- FREE

Create QR codes to social media and useful cites

- *Use recycled paper if needed*

2

FREEBIES

Don't hand out single use freebies

- *Cups*
- *Notebooks*

3

DECORATIONS

Re-useable decorations that can be used at other events.

- *Collect promotional material from SU*



ACCESSIBILITY

ENSURE THAT IT IS EASY FOR ALL
TO JOIN IN



Warnings

1

SOCIAL MEDIA

When posting add a short description about the accessibility of the event

- *Physical and social*

2

WEBSITE

On the description of an event add in the accessibility features at the SU website

3

CONSISTENT INFORMATION

Ensure all committee has relevant information to assist members



Venues

1

STEP-FREE ACCESS

Lifts, ramps and railings.

- *Consider where they are in the venue*

2

ACCESABLE TOILETS/FACILITIES

Are the facilities functioning to a good quality and easy to access?

3

CONTACT VENUE BEFORE

If you have specific needs check with the venue how they can help you

- *E.g. service animals*



ADAPT

CONSIDER HOW YOU CAN ADAPT YOUR EVENTS TO YOUR MEMBERS NEEDS

It should not always have to be up to
the person to ask for
considerations

Contact Student.involvement@solent.ac.uk if you need
help

